

The Karl Shiflett & Big Country Show



Best known for their highly entertaining "Retro" stage show The Karl Shiflett & Big Country Show have captured seemingly with ease, the irrepressible bounce and down-home, audience pleasing, good-naturedness of Classic Country & Bluegrass acts of the 1940's and 1950's. Hailing from Texas, a state with a rich musical heritage, they have managed to insert their own unique perspective, cultivating a sound that has brought them acclaim as one of the most identifiable and recognizable names in bluegrass music.

The Karl Shiflett & Big Country Show officially started in 1993 but did not gain national recognition until 1999 when they signed with Rebel Records becoming a household name within the genre literally overnight. Their debut release went to the top of the charts and featured their signature song "Where The Smoke Goes Up (And The Money Goes Down)". The group has recorded two additional projects on the same label with numerous original compositions seeing similar chart success including "It's Fall Again", "Cold Cold Love" and "Worries On My Mind" to name a few.

The group's efforts to entertain and preserve a classic "musical art form" have not gone unnoticed. They have been recognized by their peers for various awards and nominations during their career, including the IBMA "Emerging Artist" award in 2001 and nomination for "Entertainer of the Year" in 2002. Most recently the group were recipients of the 2006 IBMA "Album of the Year" award for their participation in the "Skaggs Family Records" recording, titled "Celebration Of Life".

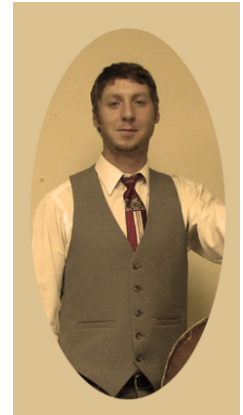
Since 2003 the band has received nationwide exposure on "RFD TV" as featured guest performers on "The Cumberland Highlanders' Show" filmed at "Bill Monroe's Home Place" high on "Jerusalem Ridge" near Rosine, KY. In 2008 and again in 2009 the group appeared on "The Song of the Mountains" television program filmed at the historical "Lincoln Theater" in Marion, VA. This program is filmed for "PBS" and is aired on about 900 stations across the U.S.

Karl Shiflett also carries the distinguished title of "Ambassador of Bean Blossom" at Bill Monroe's Memorial Park in Bean Blossom, Indiana, the largest and longest running bluegrass festival in the world (since 1966). The group promotes and spreads the word about this legendary music park and it's events throughout their travels.

The current line-up for "The Karl Shiflett & Big Country Show" includes:



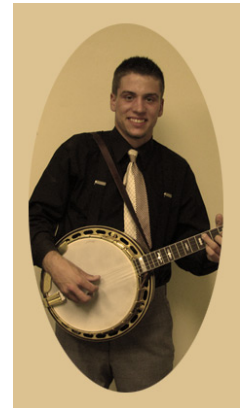
Karl Shiflett
Lead vocals and rhythm guitar



Kris Shiflett
Acoustic upright bass



Charlie Lawson
Fiddle and harmony vocals



Dillon Scott
Banjo, guitar and harmony vocals



CJ Lewandowski
Mandolin and harmony vocals